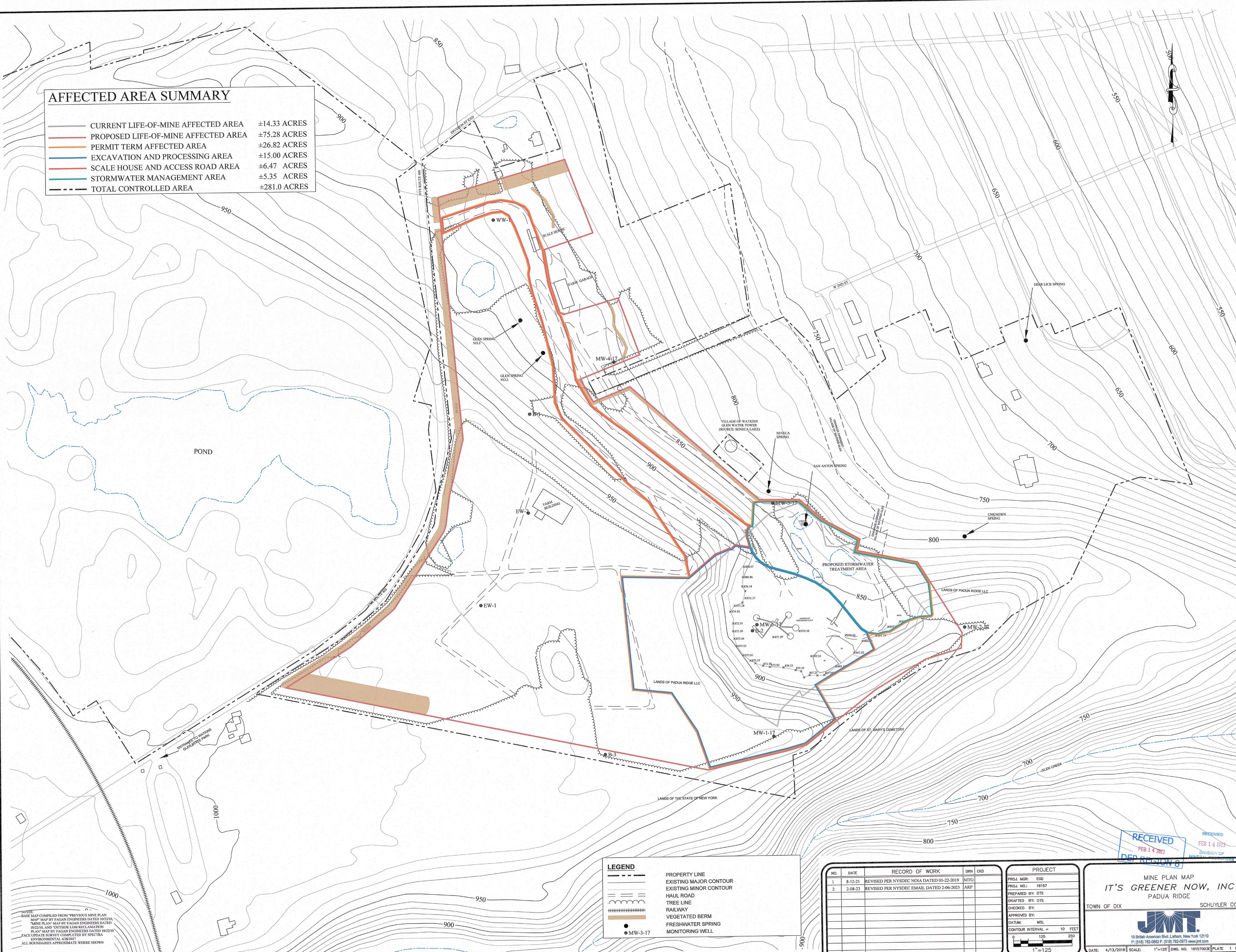


# AFFECTED AREA SUMMARY

—	CURRENT LIFE-OF-MINE AFFECTED AREA	±14.33 ACRES
—	PROPOSED LIFE-OF-MINE AFFECTED AREA	±75.28 ACRES
—	PERMIT TERM AFFECTED AREA	±26.82 ACRES
—	EXCAVATION AND PROCESSING AREA	±15.00 ACRES
—	SCALE HOUSE AND ACCESS ROAD AREA	±6.47 ACRES
—	STORMWATER MANAGEMENT AREA	±5.35 ACRES
---	TOTAL CONTROLLED AREA	±281.0 ACRES



## LEGEND

- PROPERTY LINE
- EXISTING MAJOR CONTOUR
- EXISTING MINOR CONTOUR
- HAUL ROAD
- TREE LINE
- RAILWAY
- VEGETATED BERM
- FRESHWATER SPRING
- MONITORING WELL

NO.	DATE	RECORD OF WORK	DRN	CRD
1	8-12-21	REVISED PER NYSDEC NOIA DATED 05-22-2019	MTG	
2	2-08-23	REVISED PER NYSDEC EMAIL DATED 2-06-2023	ARP	

PROJECT
PROJ. MGR: EGD
PROJ. NO.: 16157
PREPARED BY: DTS
DRAFTED BY: DTS
CHECKED BY:
APPROVED BY:
DATUM: MSL
CONTOUR INTERVAL = 10 FEET
0 125 250
1"=125'

RECEIVED  
FEB 14 2023  
DIVISION OF MINERAL INDUSTRIES

MINE PLAN MAP  
**IT'S GREENER NOW, INC**  
PADUA RIDGE  
TOWN OF DIX SCHUYLER CO., NY

**JMT**  
10 British American Blvd., Albany, New York 12210  
P: (518) 782-2002 F: (518) 782-2073 www.jmt.com

DATE: 4/13/2018 SCALE: 1"=125' DWG. NO. 16157003E PLATE 1 OF 3

NOTES:  
BASE MAP COMPILED FROM "PREVIOUS MINE PLAN MAP" MAP BY FAGAN ENGINEERS DATED 10/22/16  
"MINE PLAN" MAP BY FAGAN ENGINEERS DATED 10/22/16, AND "OUTSIDE LOW RECLAMATION PLAN" MAP BY FAGAN ENGINEERS DATED 10/22/10  
FACE UPDATE SURVEY COMPLETED BY SPECTRA ENVIRONMENTAL 4/28/2017  
ALL BOUNDARIES APPROXIMATE WHERE SHOWN